

THE MONITOR

JANUARY 2009

MESSAGE FROM THE CHAIR

INSIDE THIS ISSUE:

ENVIRONMENTAL FOCUS 2008	1
ADOPT A SCHOOL	3
NEW BOARD	3
PAST CHAIR REFLECTION	5
TEAMING UP TO MANAGE WASTE	6
LSU STUDENT CHAPTER	6
YOUNG PROFESSIONALS	8



AIR & WASTE MANAGEMENT
ASSOCIATION

Louisiana Section

It seems like just a year ago that I was asked to consider nomination for Section Chair, but in reality, it is more like 28 months. As I was considering how to begin this month's message, I started with a bit of research to determine why time seems to speed up as we age. I agree with others that this seems like a plausible explanation, and thought that it might interest you too.

Imagine that you are 5 years old. At that age, one year accounts for 20% of your lifetime. Five years is a lifetime for you since that is as long as you have been on Earth. Thinking about being 10 years old is unthinkable since it is a lifetime away! As you get older, five years becomes a rapidly reducing fraction of your

total lifetime. When you are 25 years old, one year only accounts for 4% of your lifetime. You can see that as we get older, we have a tendency to think of our lifetime to date (all the years that we have lived thus far) as a constant period.

As we grow up, we get accustomed to anticipated events in the future subjectively taking forever to come to fruition. So when subjective time starts to speed up, we don't notice. However, by the time we are 40, the wait for a future event is such a small fraction of the total time we have lived that the shortened subjective time becomes noticeable to us. By the time we have lived 50 years, five years is only 1/10 of our total lifetime, 10%. And smaller slices of time are a



Michael Vince

Louisiana Section Chair

commensurately smaller fraction of total life years. That's why the time seems to blur past after the age of fifty. (You probably have also recognized the fact that the amount of things that you remember is pretty much the same through

See MESSAGE on page 2...

ENVIRONMENTAL FOCUS 2008 - FALL CONFERENCE

The Louisiana Section Fall Conference - Environmental Focus 2008 is now in the distant past! We had an outstanding turnout with over 300 participants representing almost 100 different companies and agencies. Attendees represented a broad spectrum: students, consultants, industry, academia, LDEQ, State Police, lawyers, labs, etc. On behalf of the Air & Waste Management Association, we would like to sincerely thank everyone for

their participation in the conference on November 18 & 19, 2008 held at the Holiday Inn Select Hotel and Conference Center - both speakers and attendees. Most of all, we would like to thank the entire conference planning committee, all volunteers, who worked tirelessly and some behind the scenes to make this two-day event happen. The Environmental Focus 2008 was brought to you through the combined efforts of many of

your fellow professionals and the generous support of their employers. On behalf of the Louisiana Section, we would like to extend our appreciation to the Louisiana Department of Environmental Quality for continuing their collaboration in this event and especially to each of the DEQ presenters for sharing their knowledge and expertise.

As a nonprofit, nonpartisan professional organization that enhances knowledge and ex-

pertise by providing a neutral forum for technology exchange, public education, and outreach to our membership, we strive to have a "fair and balanced" approach to our topics and speaker selection. In addition to presentations by invited speakers, the program was further enhanced by a call for abstracts. Presentations from the call for abstracts process included "The Top 10 Things Everyone Should Know about

See CONFERENCE on page 2...

MESSAGE CONTINUED

Continued from page 1...

out your life and memories get archived into that .pst file in the back of your brain, but that is for another discussion).

So where am I going with this? Well, just 2 years ago, you elected me to the Vice Chair position on a 6-year journey that would take me to Chair and then to Past Chair of our organization. With one-third of my commitment behind me, I see so many things that I still want us to explore; what originally seemed like an interminable 6-year commitment is now melting in front of my eyes.

To help me slow time down, a number of members have stepped forward to offer their own time to keep moving

our organization forward. I would like to personally thank all of our directors, including those who were recently elected to the Board, for their willingness to serve. I want to also thank all of our committee chairs and co-chairs, especially those who have recently stepped forward: Kelly Bradberry to serve as Communications Chair, Jason Midgett to serve as Newsletter Editor, Shane Sandefer and Greg Johnson to serve as Speaker Co-chairs, Kevin Calhoun to serve as Education Committee Chair, Doug Melancon to serve as Corporate Relations Chair, Veronica Crow to serve as Membership Chair, and Jennifer Albert and Ann-Margaret Deavers to serve as Young Professionals Co-chairs. The

energy and enthusiasm that these folks bring with them, when combined with the dedicated efforts of our other committee chairs and directors, cannot help but further the progress of our organization.

Just to give you a taste of some of the things that I would like to see us work on in addition to our normal activities during 2009, they include: expansion of our Young Professionals efforts, utilizing more efficient delivery methods for disseminating Section information, employing tools to better assist in using volunteers' time wisely, posting our yearly meeting and events calendar on the website, and expanding our involvement in A&WMA headquarters and international projects.

Stay tuned for more on these and other items!

We have already set the date for our 2009 Annual Conference - October 27-28. It will be held at the same location (Holiday Inn) that is currently undergoing change to become a Crowne Plaza Hotel. My thanks to Karen Brignac and Cindy Thompson who have already stepped forward to serve as conference Co-chairs!

I look forward to seeing many of you at our January Dinner Meeting that is coming up on January 15th at Andrea's Restaurant in Metairie. Please feel free to contact me at any time to talk about Louisiana Section efforts and how we can best fulfill our mission!

CONFERENCE CONTINUED

Continued from page 1...

Climate Change" by Raymond Allen and Melita Elmore of Sage Environmental, "*Shadow Pricing Carbon in Capital Planning for Industrial Facilities*" by Charles Reith and Dimitri Shanin of Pace Global Energy Services, "*Greenhouse Gas Management—An Analysis of the European Union GHG Emissions Trading Scheme*" by Charlie Van Hoof of Providence Engineering and Environmental Group, LLC., "*Current Trends in Vapor Intrusion Pathway Investigations*" by Will Elcoate of TestAmerica, Inc., "*Recent History of PM NAAQS Rulemaking and PM2.5 NSR Implementation*" by Valerie Matherne and Brian Robson of Providence Engineering and Environmental Group, LLC., and "*Upgrade of the Marathon Louisiana Refining Division's WWTP to a State-of-the-Art Nitrification-Denitrification Facility*" by Dr. Carl Adams, Jr. and John Driver

of ENVIRON International and Chad Louque and Wally Dows of Marathon Petroleum's Louisiana Refining Division. We would like to thank all of those who submitted an abstract for the Conference. We also had a variety of interesting speakers for lunch and dinner. Thank you to Gwen Eklund, the 2010 A&WMA President, for being our lunch speaker on the opening day.

We enjoyed being your Conference Chairs this year and appreciated the opportunity to serve you. As the Board begins planning for next year, any additional feedback on this year's conference or ways to improve for next year would be appreciated. We are always interested in your input. Please feel free to e-mail us at: kevincalhoun@providenceeng.com or michael.vince@la.gov with any suggestions.

We encourage everyone to submit abstracts for next year's conference. Ab-

stracts help the conference committee know what topics really interest you and help to tailor the conference to meet those interests.

And don't forget that Detroit, Michigan will be the site for the A&WMA's Annual Conference and Exhibition in June 2009. This year's theme is appropriately named "Driving Environmental Progress." The Conference will feature a technical program boasting over 500 speakers, hundreds of exhibitors displaying the newest products and services, social tours and networking events, and professional development courses taught by leading instructors. The Annual Conference and Exhibition is the premier education, networking and solutions event for environmental professionals. Join us and be a part of a global conversation that will drive environmental progress!

Kevin Calhoun

Michael Vince

2008 Conference Co-Chairs

ADOPT A SCHOOL PROGRAM

The primary purpose of the Louisiana Section Adopt-A-School program is to select an elementary school at which the Section will award a cash donation for use at the 3rd, 4th, 5th or 6th grade level in the area of science education. It is the Louisiana

Section's desire that the funds be allocated to a specific project or purpose rather than simply becoming assimilated into the school's general fund. In addition to the cash donation, the Louisiana Section also endeavors to assist the school in its program for the year by provid-

ing speakers and arranging other educational offerings throughout the section year.

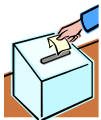
both of these schools for their excellent grant applications!!

The winners of this year's Adopt A School grants are the Children's Charter School in Baton Rouge, Louisiana and the Riverside Academy in Reserve, Louisiana. Congratulations to

Raquel Murphy
Education Committee Chair



LOUISIANA SECTION ELECTIONS



Recently, the Louisiana Section held elections for the Board of Directors. Michael Vince, previous Vice Chair transitions into the Chapter Chair position. Julie Roussel was elected as the new Vice Chair. The Vice Chair serves a two year term and is responsible for assuming the duties of the Chair when needed. Julie Roussel held a director position before her new role as Vice Chair.

Cindy Thompson will now serve two years as the chapter's Past Chair as well as hold a Co-Chair position for the 2009 LA A&WMA Conference.

Raquel Murphy was elected as the new Treasurer for the section. The Treasurer serves a two year term and is responsible for the monies and financial reports of the Section. Previously, Raquel served as the Education Committee Chair. Claudia Nethery will

continue her role as Secretary. Also, Doris B. Grego has been elected to fulfill the 2009-2011 Director position. Directors serve staggered three year terms. Before being elected to the director position, Doris served as the Corporate Relations Chair. Many new committee chairs have also been appointed. Please see the list below and welcome to our new Board of Directors and Committee Chairs!!

The Monitor is published bi-monthly as a service to members of the Louisiana Section of A&WMA in an effort to promote closer professional and personal relations among members of the Section. Visit the Louisiana Section on the web at [LA-AWMA.org!](http://LA-AWMA.org)

BOARD OF DIRECTORS AND COMMITTEE CHAIRS

Chair — Michael Vince	225-219-3485	Speaker Co-Chair— Shane Sandefer	
Vice Chair — Julie Roussel	225-353-8956	Membership Chair — Veronica Crow	
Past Chair — Cindy Thompson	225-293-7270	Corporate Relations Chair — Doug Melancon	
Treasurer — Raquel Murphy	504-561-6639	Newsletter Chair — Jason Midgett	225-927-2258
Secretary — Claudia Nethery	504-837-6326	Awards Chair — Valerie Mayhall	225-987-7391
Director (2009-11)— Doris B. Grego	985-536-5437	Education Committee Chair — Kevin Calhoun	225-766-7400
Director (2008-10) — Daniel Wolf	225-339-2774	Communications Chair— Kelly Bradberry	225-927-2258
Director (2007-09) — Diane Leche	225-977-1549	Website Chair - Diane Leche	225-977-1549
S & C Council Rep. — Bill Palermo	504-472-9993	LSU Student Chapter Chair— Derek Rusin	
SW Chapter Chair — Michael Dever	337-626-2377	2009 Fall Conference Co-Chair — Cindy Thompson	225-293-7270
Facilities Co-Chair — Katie Ricks	504-472-6563	2009 Fall Conference Co-Chair— Karen Brignac	225-358-3180
Facilities Co-Chair— Carol Murphy	504-472-9993	Young Professionals Co-Chair— Jennifer Albert	225-292-9007
Speaker Co-Chair — Greg Johnson	504-556-4115	Young Professionals Co-Chair— Ann-Margaret Deavers	

OPERATING PERMITS WORKGROUP MEETS IN FOURTH QUARTER 2008

On Thursday, November 13, 2008, the Operating Permits Workgroup (members of the Louisiana Department of Environmental Quality (LDEQ), industry, consultants, and interested parties) held its fourth quarter meeting to discuss new and ongoing issues affecting the environmental community in an effort to promote communication and cooperation between regulators, the regulated community, and the public. During the fourth quarter meeting of the Operating Permits Workgroup, several items were introduced for general discussion before reviewing recent progress on the eleven existing agenda items. Below is a summary of some of the more significant items or items which may be near completion, as discussed at this meeting:

Revisions to Louisiana General Condition XVIII – Current air permits include wording for Louisiana General Condition XVIII which LDEQ had proposed to revise. However, due to comments received by LDEQ, the existing wording will remain unchanged until the wording can be revised to both the satisfaction of LDEQ and the regulated community. In short, the proposed revisions would have required approval by LDEQ in order for owners/operators to appeal permitted limits or conditions. This approval process, which would be left to the LDEQ's discretion, could have potentially left an owner/operator with the challenge of complying with an impractical permit limit or requirement until such time that an appeal is approved by LDEQ or the permit could be modified accordingly.

New LDEQ Policy for Inclusion of Short-Term Limits in Air Permits – LDEQ has recently established a three page policy describing how and when to permit short-term emission limits, often referred to as maximum pound per hour emission limits. This policy establishes that not all emission sources are required to permit maximum pound per hour emission limits. Generally-speaking, storage tanks, fugitives, heat exchange systems, wastewater ponds, and maintenance wastewater do not typically require short-term limits. However, short-term limits may not be required for other source types if the sources (1) are operated at constant rates or there are no underlying federal or state requirements that specify compliance in terms other than an emissions rate and (2) inclusion of such a limit is not necessary to ensure compliance with a National Ambient Air Quality Standard or a Louisiana Ambient Air Standard.

Description of Exceptional Circumstances to Justify a Variance Request – The LDEQ has updated the "Application for Approval

of Miscellaneous Permitting Actions" to expand on the information requested regarding requests for variances. This newly requested information will allow the LDEQ to process variances in a more efficient manner by reducing the amount of additional information that is often requested by LDEQ. The new information requested includes an explanation of the need for the variance and identification of the exceptional circumstances that qualify for issuance of a variance in accordance with LAC 33:III.917.

Statutory Exemption for Small Sources – Current air quality regulations (LAC 33:III.501.A.4) regarding exemptions are being updated to reflect a recent Senate Bill (Bill 384) which was signed by Governor Jindal. These revisions clarify that, although an owner/operator may not be required to obtain a permit, the LDEQ does have the authority to instate standards, limitations, and recordkeeping requirements with which the owner/operator must comply. This revision also allows for consideration of control devices and historical practices when calculating potential emissions that may be emitted from a facility.

Promulgation of General Conditions in Air Quality Regulations – In an effort to standardize the General Conditions typically referenced in an air permit, the LDEQ is moving forward with incorporating the General Conditions into the air quality regulations. LDEQ is currently preparing its response to comments received and anticipates submittal of the rule package to the Legislative Oversight Committee by February 2009.

Regulatory Permits – Regulatory permits will be simplified permits for specific emission types or sources that can be easily permitted in a relatively short amount of time. The intent is to decrease some of the burden on both LDEQ and the regulated community when permitting some of these more common emission types. The first regulatory permits will benefit the oil and gas industry; however, it is anticipated that other industries will be impacted in the future. Currently, the provisions outlining the statutory requirements and limitations for all regulatory permits have been proposed (see AQ274). This proposed rule also identifies the requirements and limitations for the first wave of regulatory permits (oil and gas well testing, release of natural gas from pipelines, emergency engines, and air curtain incinerators). LDEQ has received comments to the proposed rule and will be addressing comments received. A final rule package is expected to be submitted to

See WORKGROUP on page 5...

PAST CHAIR REFLECTION

During the past two years that I have served as Chair of the Louisiana Section I have constantly been grateful for all of the volunteer efforts made by such a large number of people. These volunteers are too numerous to name but I want to thank each one for their unique contributions to the success of the organization. There was lots of brainstorming, planning, meetings, organizing, sharing of technical knowledge, writing, networking, and just plain old work. These volunteers helped when needed and got the job done.

There is one group of volunteers that I have enjoyed getting to know very well and I want to express a BIG THANK YOU to this special group, the Board of the Louisiana Section. One of the hardest things to do in our busy world of work and personal commitments is to show up, make that many board meetings and provide guidance to keep the Louisiana Section moving forward to meet the needs of our members. Of course the work doesn't end with the board meetings, from there each board member consistently met their commitments

to fulfill their role and to fill in any gaps as needed. This is the group that has faithfully performed to implement the educational programs including scholarships and student chapters and technical programs such as the Annual Fall Conference and dinner meetings. This group is the backbone of the Louisiana Section and I have been honored to work with them.

I wish Michael Vince continued success as he begins his position as Chair for the next two years and congratulate Julie Roussel on her new position as Vice Chair. Their leadership will



Cindy Thompson
Louisiana Section Past Chair

continue to grow our organization to meet the needs of environmental professionals in the Louisiana Section. Please invite your colleagues to join you at our meetings during 2009, this is going to be a great year!

Cindy Thompson

WORKGROUP CONTINUED

Continued from page 4...

the Legislative Oversight Committee by February 2009.

Other items to watch for future activity include revisions to the opacity requirements of Chapter 11 of the air quality regulations, revisions to Chapter 13 to address monitoring and recordkeeping requirements commonly permitted under the general authority of LAC 33:III.501.C.6, revisions to the fugitive

emission requirements of LAC 33:III.2121 and 2122, clarification of the marine vapor recovery requirements of LAC 33:III.2108, and revisions to the air toxics rules of LAC 33:III.Chapter 51. Additionally, keep an eye out for LDEQ to provide written guidance concerning historical air modeling policy and requirements.

If you'd like more information regarding any of these topics, would like a copy of the agenda from the November meeting, or would like to know more about

attending the next meeting, you may contact Bryan Johnston, Administrator of LDEQ's Air Permits Division, at (225) 219-3001. The next Operating Permits Workgroup Meeting is tentatively scheduled to be held on February 12, 2009 at 9:30am at the LDEQ's Galvez Building.

Jamie Godbold

SOUTHWEST CHAPTER NEWS

The year 2008 marked the 5th Anniversary of the Southwest Louisiana Chapter of A&WMA. In 2008, the Southwest Louisiana Chapter sponsored two Webinar events. These events were titled "The new NSR PM2.5 Rule" Webinar on August 27,

2008 and "Air Litigation Issues" Webinar on October 30, 2008.

The Southwest Louisiana Chapter looks forward to another year and continued service to its members.

Also, congratulations to the new Southwest Louisiana Chair, Michael Dever!

Drew Cagnolatti

Southwest Chapter Past Chair

OUTSTANDING ACHIEVEMENT AWARD

In 2001, the Louisiana Section of the Air & Waste Management Association established an annual award to recognize outstanding achievement in the fields of air pollution control or waste management. The award recipient is a company or individual whose contribution to the state of the art technology has been accomplished within the last two years.

The Section has been pleased with the high quality of projects nominated for the award in previous years, and the year 2008 was no exception. The winner for the year 2008 was PPG Industries, Inc. The title of their winning project was "Membrane Cell Unit Project." The goal of the project was to replace PPG's mercury-based chlor-alkali production operation (Mercury Cell Unit) with

new membrane technology (Membrane Cell Unit). The PPG Membrane Cell Unit project represents a \$100 million investment in the future of the PPG Lake Charles facility. The Membrane Cell Unit uses state-of-the-art technology for the production of chlorine and caustic and has proven itself to be more reliable, more energy efficient, and more

environmentally responsible than the technology it replaced. The conversion to the new technology took over two years to accomplish. Converting the chlorine and caustic production process from Mercury Cell to Membrane technology eliminated the use of mercury at the PPG Lake Charles facility and will virtually eliminate mercury emissions. Additional environ-

mental benefits, such as greenhouse gas emission reductions, are also realized because the new Membrane Cell Unit uses 25 percent less electricity to achieve the same production rate.

The award winner, PPG Industries, Inc., was honored at the Section's dinner meeting at Bull's Corner on September 18th.

We look forward to receiving your nominations for the 2009 Outstanding Achievement Award.



Valerie L. Mayhall is the Awards Chair of the Louisiana Section.

She may be reached at:

225.987.7391;

225.987.3015 (fax); or

valerie.mayhall@shawgrp.com

IMPORTANT DATES

- January Dinner Meeting at Andrea's in Metairie (see attached) January 15
- A&WMA Conference: Latest Developments in Air Modeling (Canada) January 19
- DEQ Public Hearing January 27
- A&WMA Conference: Vapor Intrusion 2009 (San Diego, CA) January 27
- LDEQ Air Permit Workgroup Meeting February 12
- March Dinner Meeting March 19
- A&WMA Conference: First International Greenhouse Gas Measurement Symposium (San Francisco, CA) March 22-24
- LA Solid Waste Conference in Lafayette (DEQ) March 26-27
- Louisiana ENVIROTHON April 25
- A&WMA National Conference, Detroit, MI June 16-19
- LA Section of A&WMA Fall Conference 2009 October 27-28

Descriptions for events can be found on the [AWMA website](#) or the [Louisiana DEQ website](#).

LSU STUDENT CHAPTER

The student chapter would like to thank Cindy Thompson who spoke during the November meeting at LSU. Ms. Thompson spoke about the A&WMA National Meetings and student challenges. The

chapter was busy studying for finals in December and would like to congratulate two of our members who graduated; Lauren LeBlanc and Jacob Morrison.

Don't forget to pick up a student resume booklet when available at LA A&WMA dinner meetings and conferences.

TEAMING UP TO MANAGE WASTE: SERVICE LEARNING IN ENVIRONMENTAL MANAGEMENT CLASSES

Two Environmental Management Systems classes at Louisiana State University and the LSU student chapter of A&WMA have partnered with the East Baton Rouge Recycling Office to assist in several events and to learn about problems and possible solutions to the growing problem of municipal solid waste and hazardous waste management.

Waste management is especially important at an Earth Day celebration. Baton Rouge Earth Day commonly attracts thousands of participants for an event that includes informational booth and activities, as well as music and food. For several years Environmental Management students have worked with the Recycling Office and the contracted recycler to discuss strategies for keeping waste off the ground and in proper containers, including recycling bins for plastics, glass and aluminum. Students help label and distribute recycling bins along the downtown boulevard, then monitor the bins, pick up items off the ground, and sort through bins



Students Chris Dugas, Tyler Jones and Marianne Alford preparing recycling bins and talking to visitors at Baton Rouge Earth Day 2007.

as necessary to sort recyclables.

Environmental management students have also assisted with recent East Baton Rouge Household Hazardous Materials Collection Days (HHMCD). Students greeted the public, offered bottled water, and answered questions in addition to handing out and collecting the surveys. Information collected through the surveys included how people learned about the event, their zip code, and their willingness to pay for a permanent hazardous waste facility. The survey data allowed better planning

for publicizing the event in subsequent years, and provided evidence that citizens believe a permanent collection facility is worth funding.

The goal of the Environmental Management Systems curriculum at Louisiana State University is to provide students with a background in physical and biological sciences as well as coursework in the application of scientific information, integrated with social and political realities, to work on environmental problems and solutions. The service-learning activities con-

ducted in partnership with the East Baton Rouge Recycling Office have greatly contributed to students' appreciation of the challenges posed in involving the community in responsible waste management.

Dr. Maud M. Walsh

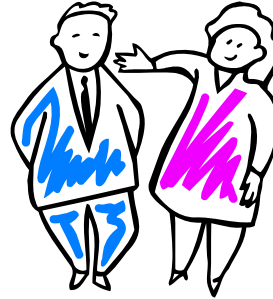
**School of Plant, Environmental
and Soil Sciences,**

**Louisiana State University,
Baton Rouge, LA 70803**

WELCOME TO OUR NEWEST MEMBERS

Kevin Andries, LSU
 David Burroughs, Chemtrade Logistics
 Tracy Fazio, C-K Associates
 Bill Greenwich, C-K Associates
 Cliff Janney, PPM Consultants
 Eric McKee, Shell Chemical
 Vinh Nguyen, C-K Associates
 Daniel Strecker, C-K Associates
 Jacob Talbot, ENVIRON
 Stephen Wiegand, Liskow & Lewis

Cassandra Wiggins, Calcasieu Refining Company
 Kelly Young, ENVIRON



If you would like to contribute to the Monitor, please contact Kelly Bradberry by telephone at 225-927-2258 or by email at kellyb@sageenvironmental.com

The staff at the Monitor would like to thank everyone that has contributed to the newsletter. Through your contributions, the success of the Monitor will continue!

YOUNG PROFESSIONALS

For the second consecutive year, the Louisiana Section A&WMA Fall Conference included a session dedicated to the needs of Young Professionals. The session included panel presentations by the Louisiana Department of Environmental Quality (LDEQ) on Environmental Regulations and Air Permitting 101. The session was well attended by consultants, and industry and agency personnel. The Louisiana Section plans to include a YP session in the 2009 conference which is scheduled for October 27-28 in Baton Rouge.

Effective January 1, 2009, A&WMA is offering a new membership category - Young Professional Introductory Membership. The new membership category is offered at a discounted rate of \$93 per member compared to \$180 for Individual Membership. A&WMA has established the following guidelines to qualify for the Young Professional Introductory Membership: Any person, age 35 or under and working in the environmental profession, interested in accomplishing the mission and objectives of the Association shall be eligible for

Young Professional Introductory Membership. This membership is valid for the first five consecutive years of A&WMA membership in this category. It cannot be retained for more than five (5) years or renewed after the age of 35. For more information on this new membership category please visit www.awma.org.

Jennifer Albert

Young Professionals Co-Chair

LOUISIANA SECTION SPONSORS

THANKS TO OUR SPONSORS TO DATE

Cabot Corporation
 C-K Associates, LLC
 Cytec Industries, Inc.
 Dow Chemical Co. St. Charles Operations
 DuPont Performance Elastomers
 Emission Testing Services, Inc.
 Entergy Services, Inc.
 Environ International Corporation
 Enviro One, LLC
 ExxonMobil Baton Rouge

Formosa Plastics Corporation, Louisiana
 Hexion Specialty Chemicals, Inc.
 Kean Miller Law Firm
 Liskow & Lewis
 Marathon Petroleum Company
 PPM Consultants, Inc. - Baton Rouge Office
 RTP Environmental Associates, Inc.
 Sage Environmental Consulting, L.P.
 Shaw Environmental & Infrastructure

Sherry Laboratories—Louisiana
 Syngenta Crop Protection, Inc.
 Taylor Porter LLP
 Total Petrochemicals USA, Inc.
 Trinity Consultants, Inc.
 United Risk Management, LLC
 Williams Olefins, LLC

Ring in the NEW YEAR with the
Air and Waste Management Association's
January Dinner Meeting

At

Andrea's

3100 19th St
Metairie, LA 70002

Date: Thursday January 15th

Time: Social begins at 5:30, Dinner Served at 6:30

Speaker - Maureen Harbourt

Kean, Miller Law Firm

Ms. Harbourt will speak on recent decision by the D.C. Circuit on the startup, shutdown, malfunction (SSM) provision for MACT sources (appeal of the 2006 revisions).

Reservations: Fax this form to (504) 472-9963 or call Carol Murphy at (504) 472-9993 by **Monday January 12th at NOON**. In order to complete your registration, we must receive your full name, company, and credit card information. Your credit card will be used only as a guarantee and will not be charged until January 15th. You may still pay by company check or personal check at the meeting, but if you do not attend, your credit card will be charged for the number of people for which you made a reservation. If you have any questions about registering, please EMAIL Carol Murphy at cmurphy@rtpenv.com. If you wish to use email to indicate your intent to attend the meeting, you are welcome to do so, however, please remember that your reservation will not be confirmed until your credit card information is received via telephone, FAX or mail. **The Section cannot accept email messages containing credit card information; any such messages received will be deleted immediately for your protection!**

Name/Company _____

Email _____ Phone (_____) _____

Visa MasterCard American Express Expiration ____/____

Credit Card Number

- - -

Meeting Registration Fee:

\$35 Members/Corporate Sponsors \$40 Nonmembers \$45 at the door \$15 LDEQ/Students
