

Groundwater Monitoring at Solid Waste Facilities



Geological Services Section

Dru Trahan, Geologist III

Estuardo Silva, Geologist Supervisor



Purpose



- To detect the earliest possible release from the solid waste facility
- To protect human health & the environment
- To protect the facility



Regulations



- LAC 33:VII.522 & Chapter 8
 - GW Monitoring specifically in §805



Treatment Storage Disposal



- Landfills
- Surface Impoundments



LAC 33:VII.522 / Chapter 8



- Subsurface Geology & Hydrogeology
- Groundwater Monitoring Network
- Sampling and Analysis Plan
- Detection Monitoring



Subsurface Geology

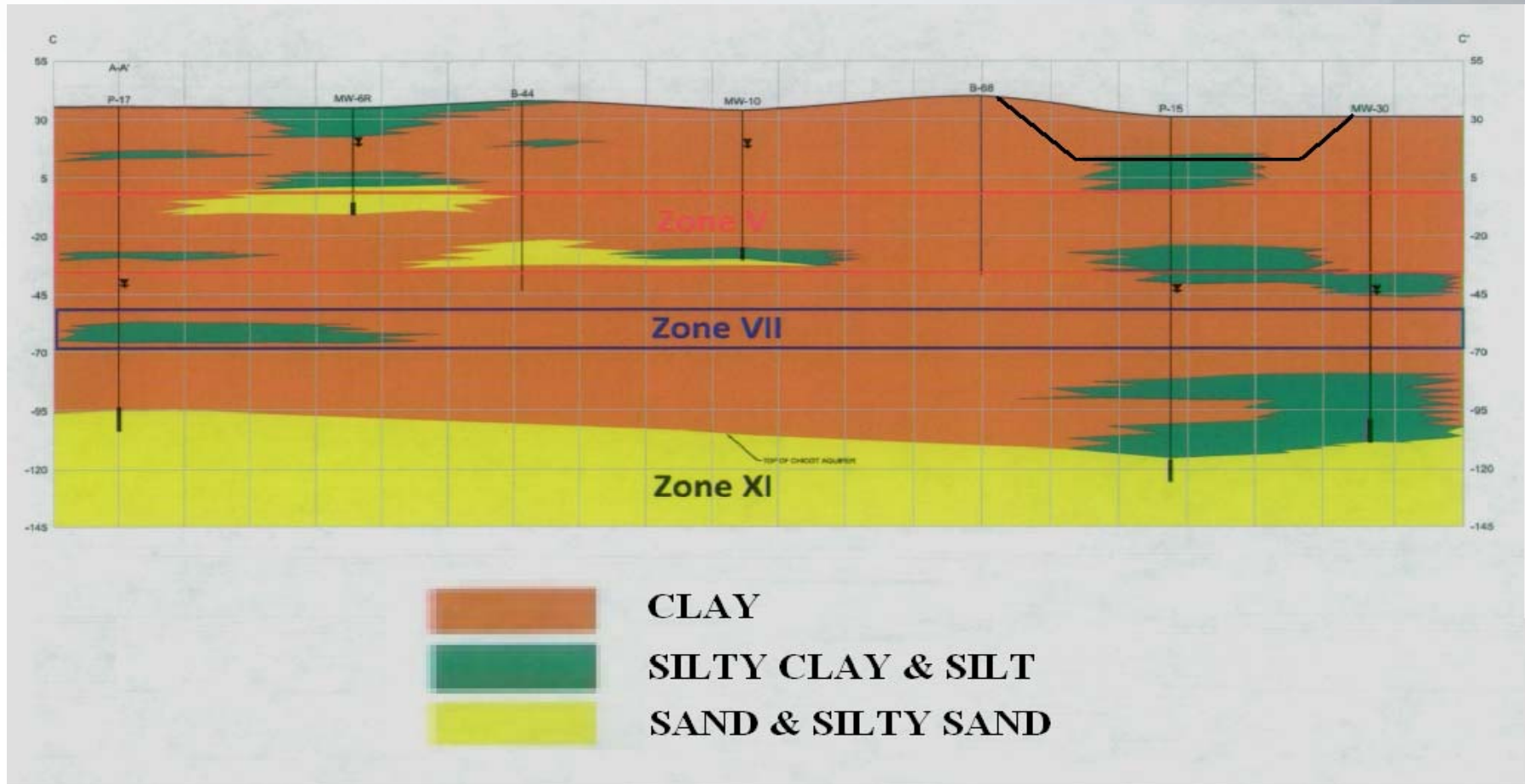


- Boring spacing and depth requirements
- Regional information
- Uppermost water bearing unit, uppermost aquifer, lower confining unit
- Isometric profile vs. isopach and structure maps.



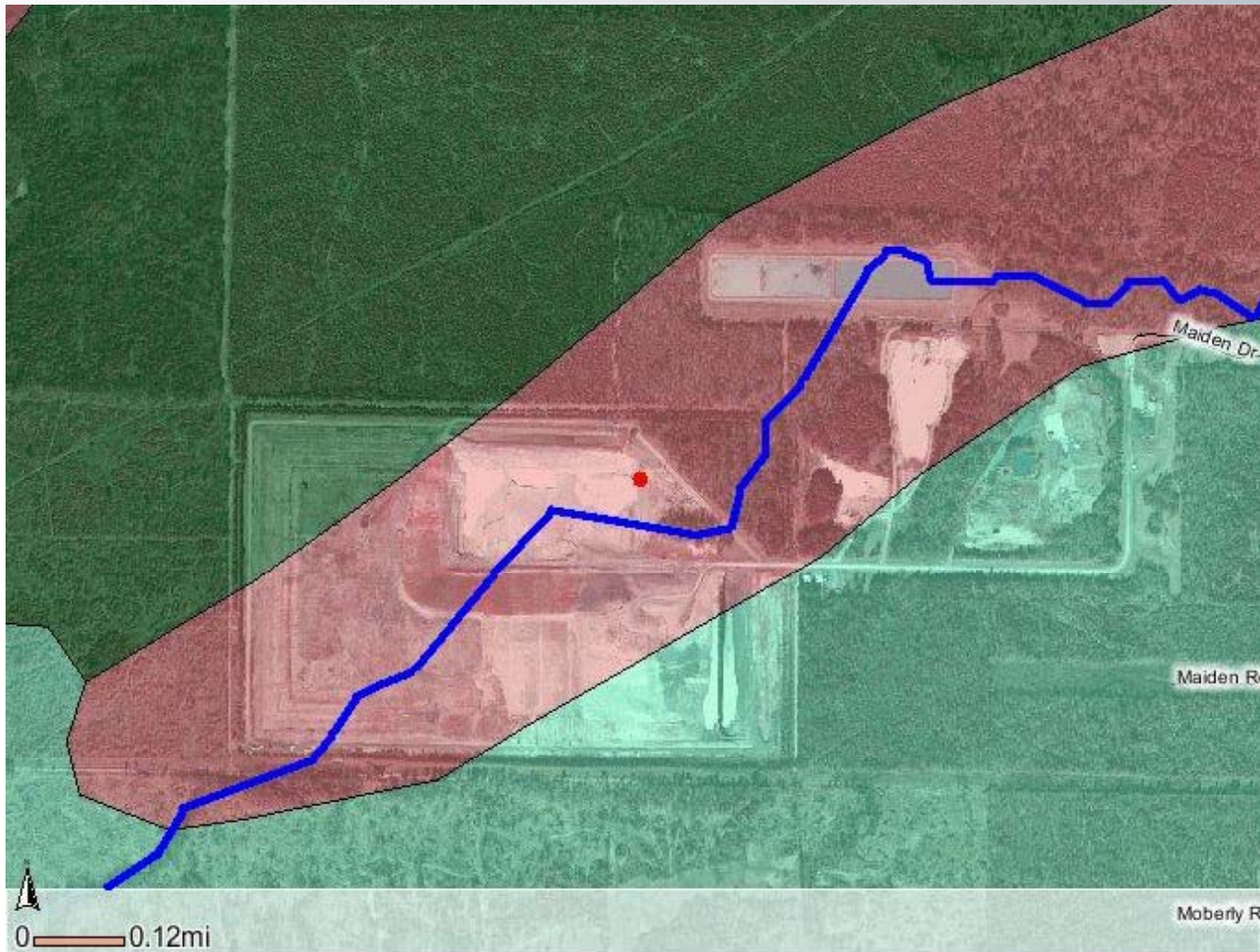
Subsurface Geology

(continued)



Subsurface Geology

(continued)



Hydrogeology

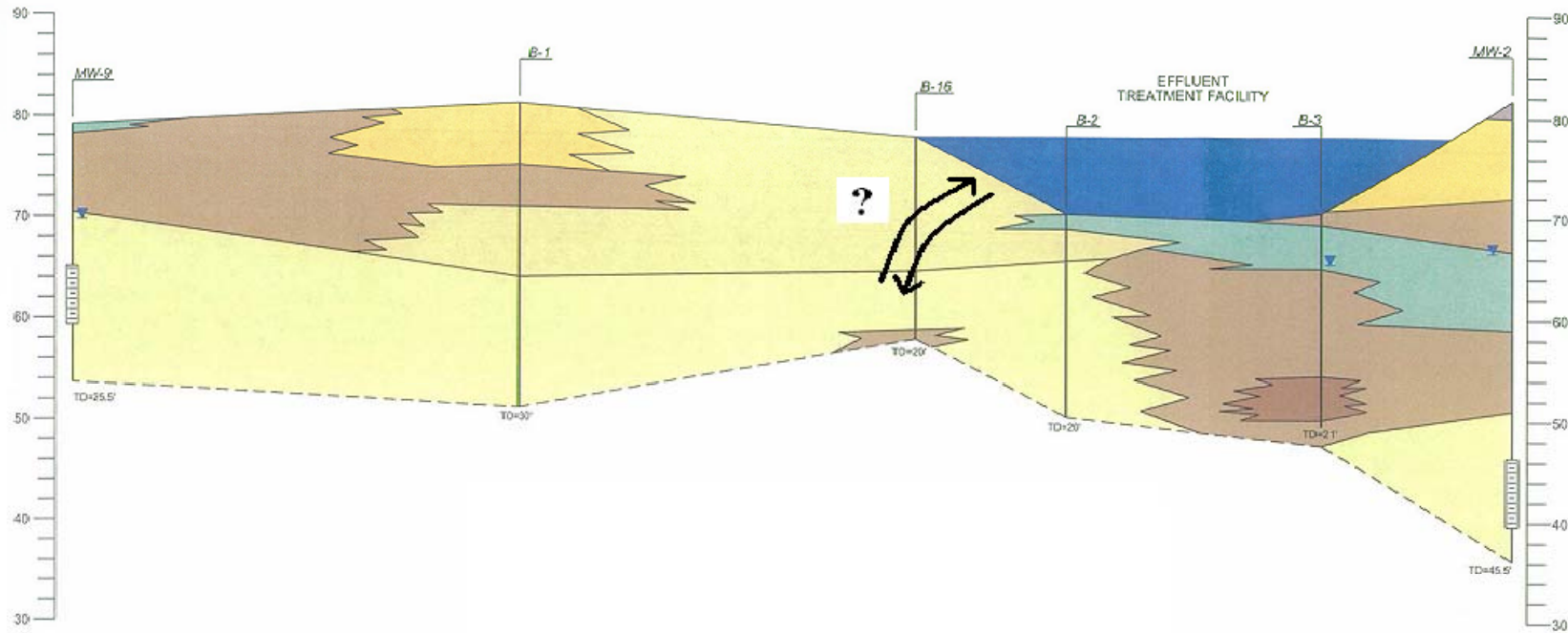


- Groundwater flow direction
- Mounding
 - Lined vs. unlined impoundments
 - Depth and thickness of permeable units beneath the impoundment
 - Depth of impoundment (bottom of the excavation)



Hydrogeology

(continued)



GW Monitoring Network

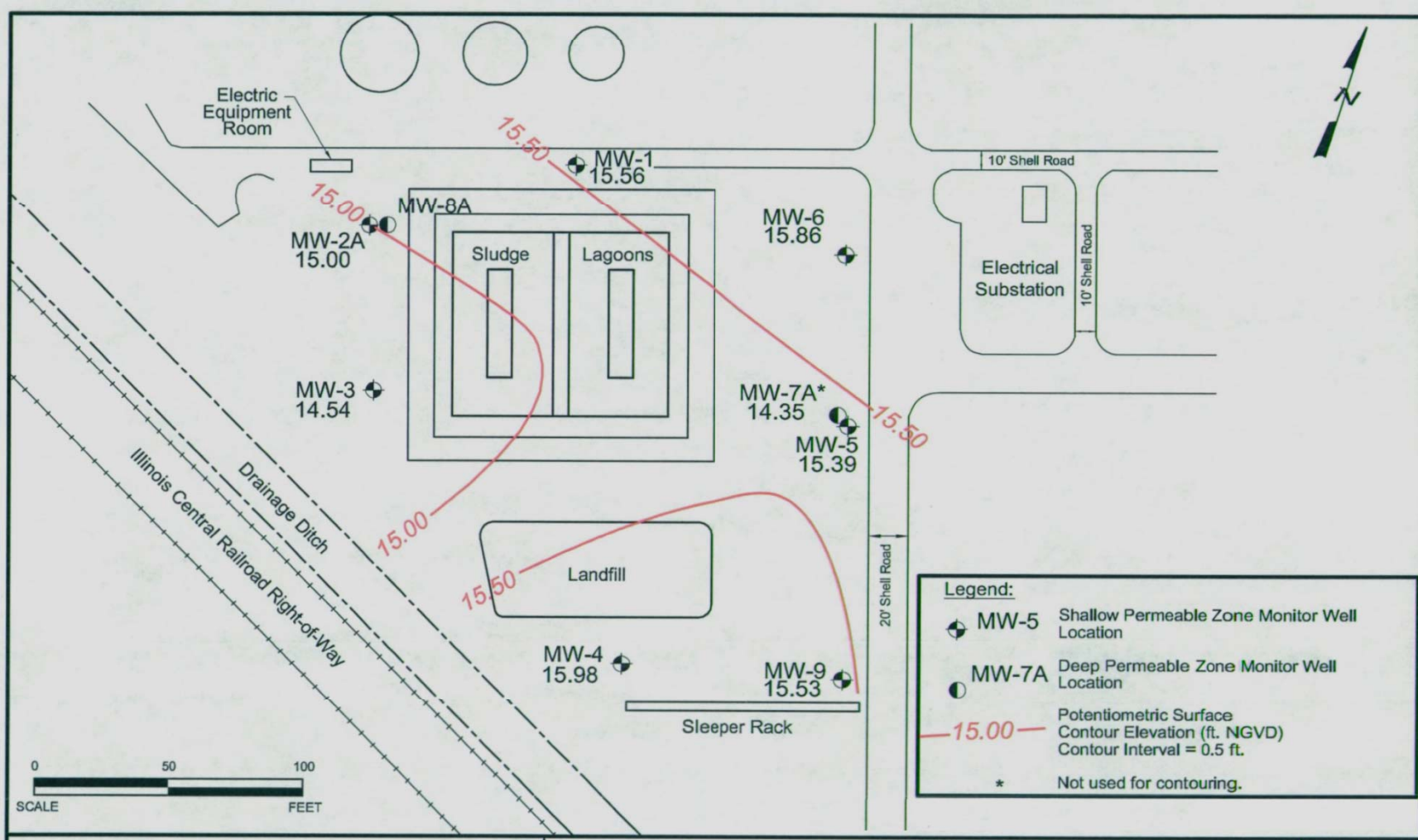


- Location of monitoring wells
 - Mounding vs. Upgradient and Downgradient
- Appropriate number of monitoring wells
 - Does the facility need additional monitoring wells?



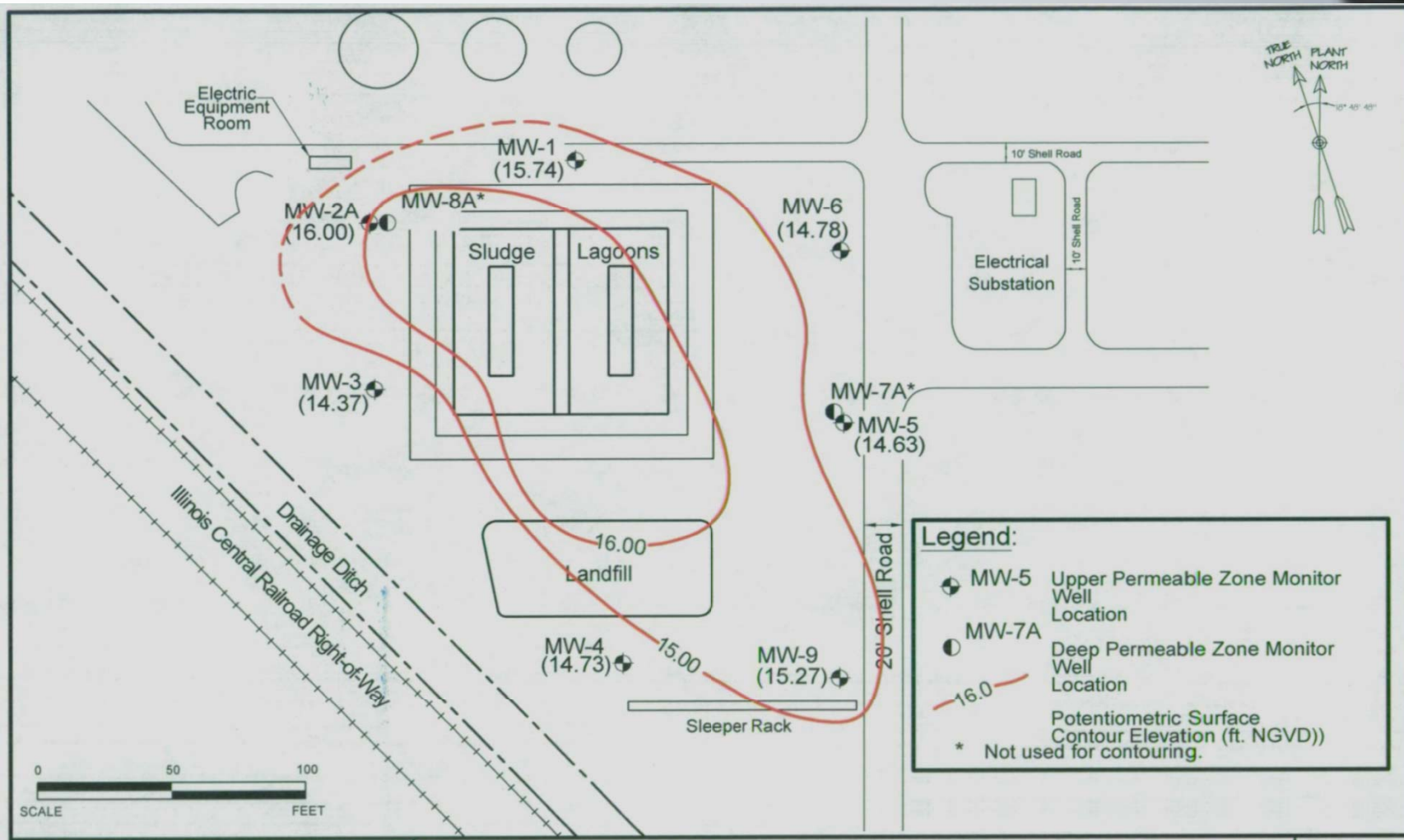
GW Monitoring Network

(continued)



GW Monitoring Network

(continued)



Sampling and Analysis Plan



- What parameters should be monitored in groundwater?
 - Natural vs. unnatural?
- Process knowledge?
- Complete chemical analysis of the waste
 - (not TCLP or Waste Water)



Sampling and Analysis Plan

(continued)



- An initial sampling event consisting of quarterly background sampling for one year.
- Semiannual detection monitoring
- Statistical comparison of data from downgradient wells to background data



Sampling and Analysis Plan

(continued)



- **Statistical Analysis**
 - Proposed after initial sampling event
 - Interwell Statistical Analyses
- **Decision Tree**



Detection Monitoring

(continued)



- Evaluation of data
- Concentration vs. Time Graphs
 - Explain any Variabilities or Trends
- Statistical Analyses results
 - Include documentation and interpretations

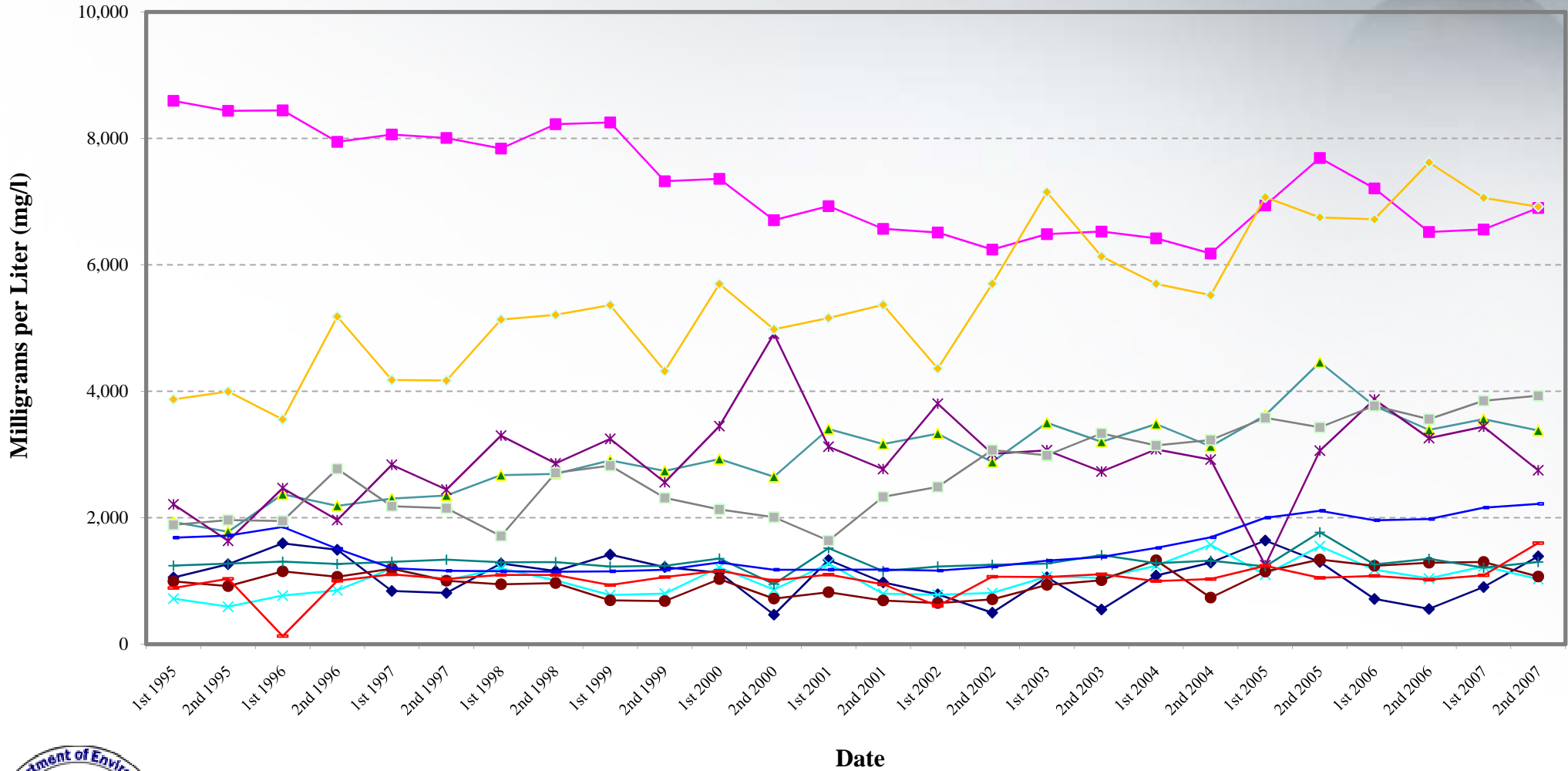


Detection Monitoring

(continued)



Total Dissolved Solids



OW-27 [REF]	OW-1 [D]	OW-2 [D]	OW-3 [U]	OW-4 [U]	OW-5 [U]
OW-8 [U]	OW-13 [U]	OW-24 [D]	OW-25 [U]	OW-26 [D]	

Detection Monitoring

(continued)



- Any VOC or SVOC detection is considered to be statistically significant
- Comparisons to RECAP Standards are not allowed while in detection monitoring



Questions or Comments



Dru Trahan
drukell.trahan@la.gov
225-219-3417

Estuardo Silva
estuardo.silva@la.gov
225-219-3408

