



# Emissions Reporting and Inventory Center

**ERIC**

**Lessons Learned and Plans  
for 2008**



- Where we started . . .

**LOUISIANA DEPARTMENT OF ENVIRONMENTAL QUALITY**  
: A CLEAN STATE OF MIND FOR ALL YOUR ENVIRONMENTS

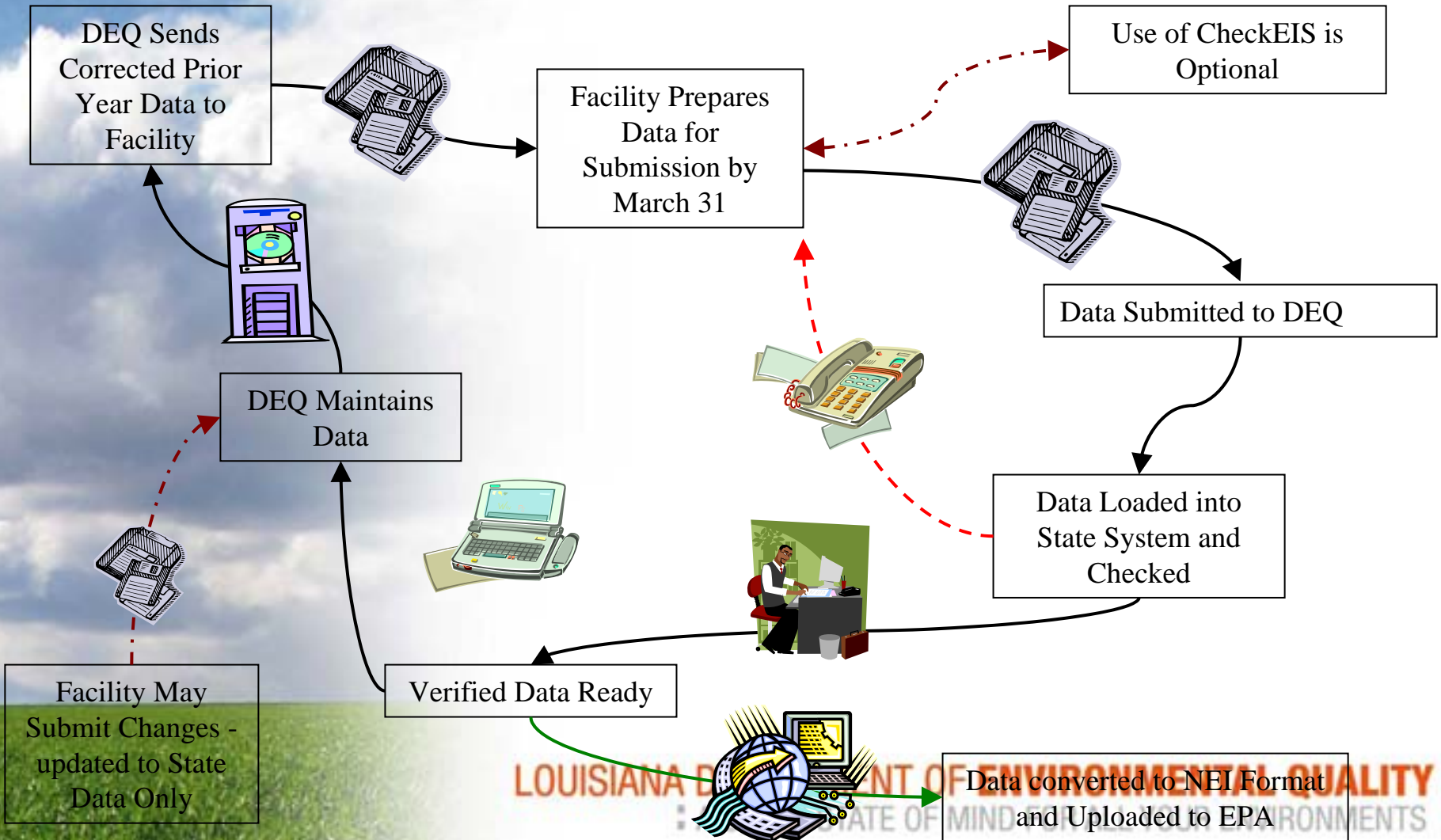


## Purpose - Strengthen and Improve EI process

- Design, develop, and implement a user friendly system
- Make data accessible to public and other users
- Enhance data quality and validation
- Integrate data into other Department functions

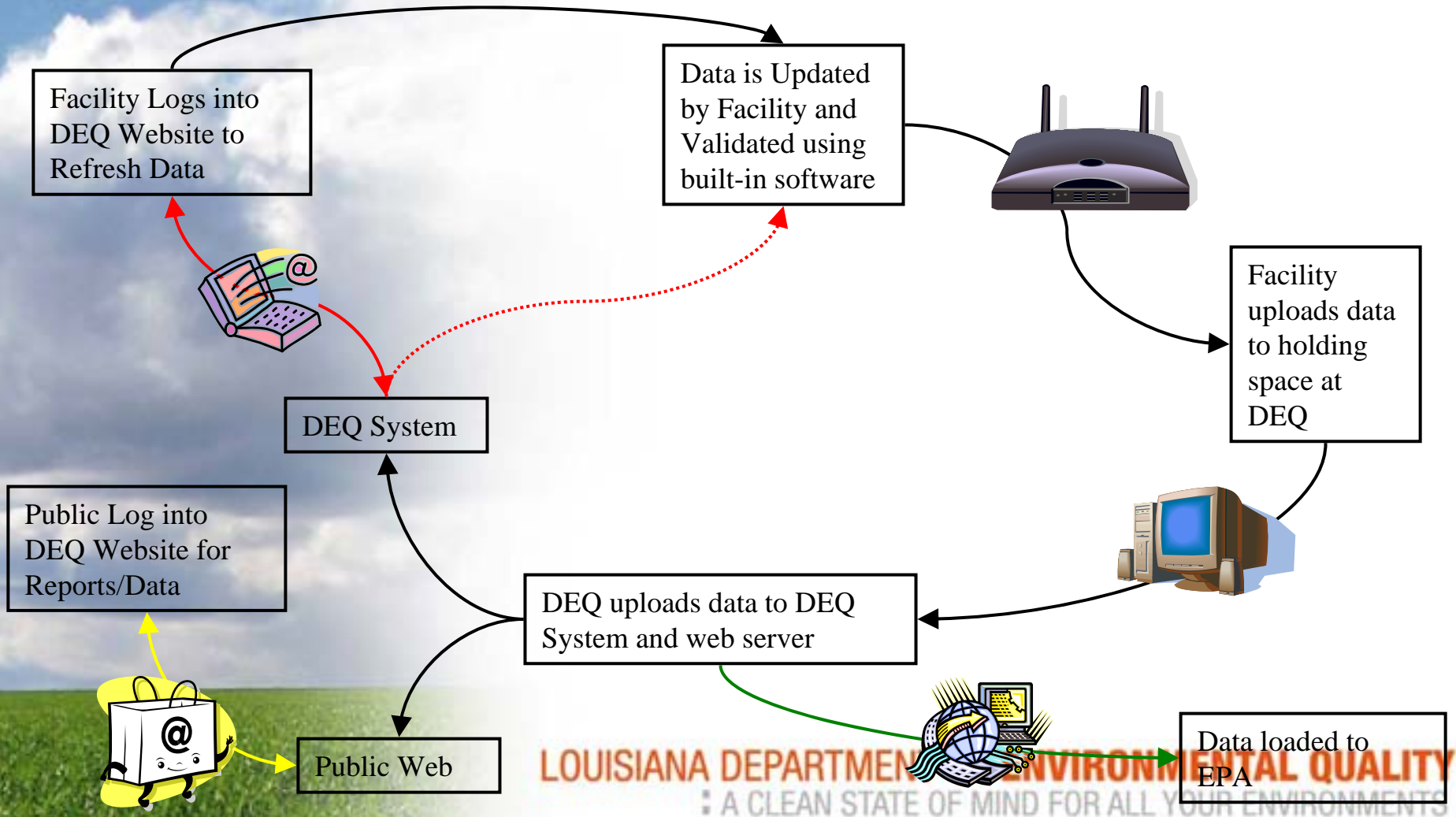


# Existing Process





# Vision for the Future







# Identified Areas for Improvement

- Large number of errors in industry submitted files – **Still some errors, but much better!!**
- Data format difficult to deal with – **Format easier, but some problems with spreadsheet!**
- Significant translation necessary to get data into EPA format – **Still working on EPA transfer!!**
- Difficult to fully utilize data for planning and compliance purposes – **Much better!!**
- Limited web-based data availability – **Still working on reports, but close!!**



# Project Schedule

- Data Collection and Validation Module
  - Ready for use by December 2005 (**April 2007**)
- Data Transmission Module
  - Ready for use by December 2005 (**TBD**)
- Reporting Module
  - Expanded availability of historical information immediately
  - Real Time Capabilities by December 2006 (**December 2007**)



# Registrations – Created and implemented registration portals

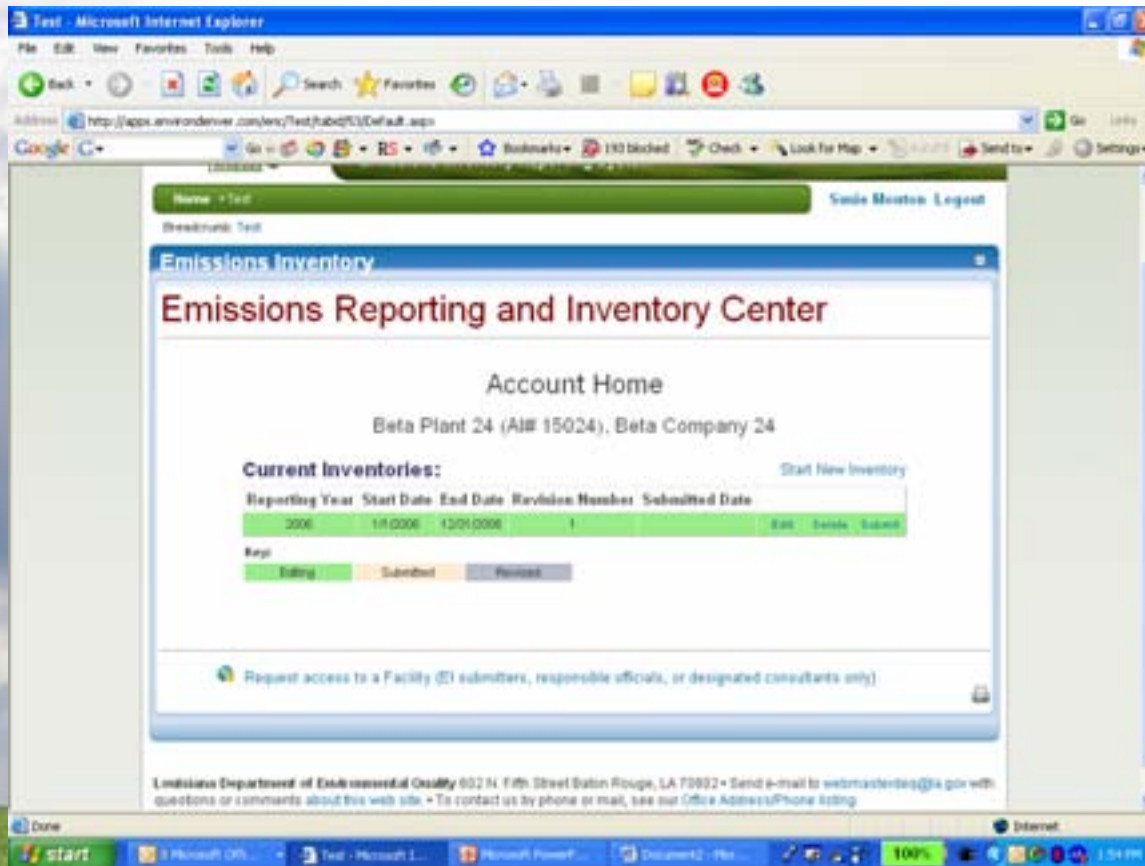


**LOUISIANA DEPARTMENT OF ENVIRONMENTAL QUALITY**  
A CLEAN STATE OF MIND FOR ALL YOUR ENVIRONMENTS





# Created Facility Accounts for all EI Facilities



**LOUISIANA DEPARTMENT OF ENVIRONMENTAL QUALITY**  
A CLEAN STATE OF MIND FOR ALL YOUR ENVIRONMENTS



# What we did . . .

- Completed the design and beta tested February 2007
- Extended EI Deadline in March 2007 (involved issuing Declaratory Ruling to correct over 900 permits)
- Conducted ERIC training during month of April 2007 (four sessions across state and webcasts from BR)
- ERIC went live April 2007!
- Final EI's due September 1, 2007
  - Over 860 submittals received



# What went wrong . . .

- Spreadsheet versions caused problems
- Updates need to be scheduled
- Reference tables need work
- Validation issues
- Guidance needs to be expanded
- Tempo integration issues
- Performance issues/Upload problems
- Data element phase-in



# Enhancements

- User Manual Revisions/Additions
- CROMERR Compliance
- Align EI reporting with Permits
- Greater Integration with TEMPO
- More Online Services
- Better System Performance
- Rule Development for TEDI and EI