



# EPA, R6, Enforcement Priorities

Steve Gilrein, Deputy Director

Compliance Assurance & Enforcement Division  
Air & Waste Management Association - Louisiana



10/28/07

# Topics to be Covered:

- 
- A light blue map of the Southeastern United States, including parts of Virginia, North Carolina, South Carolina, Georgia, Florida, Alabama, and Mississippi. The map is overlaid with a list of topics.
- **EPA's role**
  - **National priorities**
  - **Regional priorities**

# EPA's Role

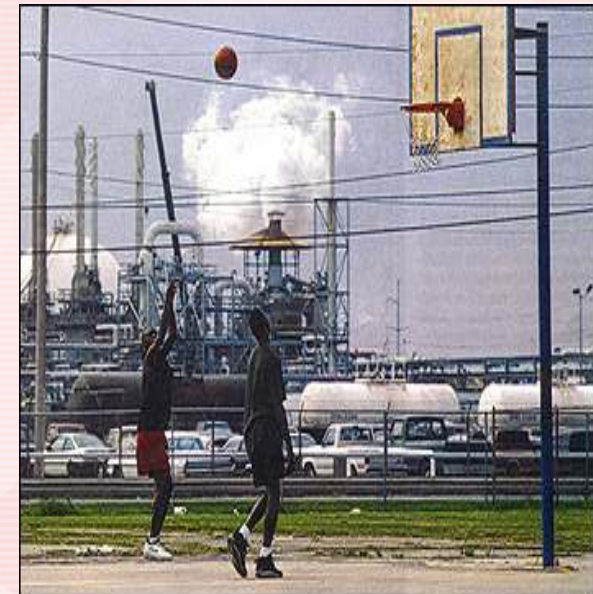
**Mission – Compliance with Federal environmental regulations in partnership with our States and Tribes**

## **Role**

- **National Program Integrity**
- **State/Tribal Partnership**

# General Themes

- **Human Health Impact**
- **Environmental Impact/Benefit**
- **Cost of Injunctive Relief**
- **Non-compliance History (SNCs)**
- **State Program Integrity**



The background of the slide is a close-up, slightly blurred image of the American flag, showing the stars and stripes. The flag is draped and appears to be moving, with the stripes creating a sense of depth and perspective. The colors are vibrant, with the red and white stripes and the blue field with white stars.

# **National Priorities**

**Air**

**Water**

**Waste**

# Air

- **New Source Review**
  - **Cement Plants**
  - **Acid Plants**
  - **Glass Manufacturers**
- **Air Toxics**
  - **Flare Operations**
  - **Surface Coatings**
  - **LDAR**



- CAFOs
- Combined Sewer Overflows
- Stormwater



# Waste/RCRA

- **CA Financial Responsibility**
- **Mineral Processing**





The background of the slide is a close-up, slightly blurred image of the American flag, showing the stars and stripes. The flag is draped and appears to be waving. The colors are vibrant, with the blue field of stars on the left and the red and white stripes on the right.

# **Regional Priorities**

**Air**

**Water**

**Waste**

# Air

- **112r Pilot**
- **Oil & Gas – IR Camera**
- **Non-attainment Targeting**
- **Aggregate Inhalation Impacts Targeting**

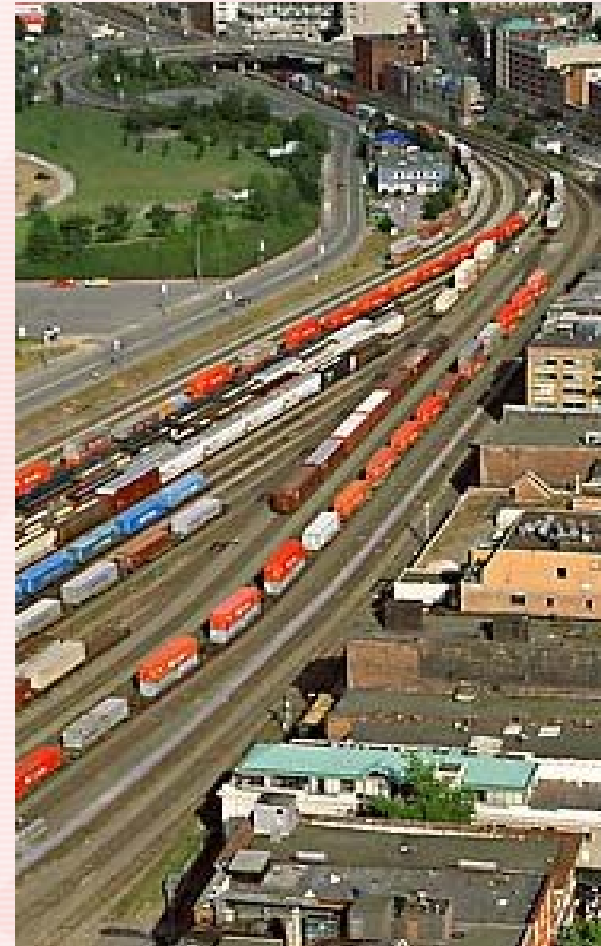


# Water

- Drinking Water Quality & Health-based Limits
  - SNC
  - Targeting in Impaired Water-sheds
- 
- An aerial photograph of a wide river with a bridge crossing it. The bridge has a large, arched steel truss structure. To the right of the bridge, there is a construction site with various pieces of equipment, including excavators and trucks. The surrounding area is densely wooded with trees in shades of green and brown, suggesting an autumn setting. The water in the river is a murky, brownish color.

# Waste/RCRA

- **Surface Impoundments**
- **Rail Cars/Rail Yards**



# Performance Track

- Background
- Recognizes & rewards top environmental performers that go beyond regulatory requirements
- Launched Mid-2000
  - currently over 350 Members

## To Apply You Need

- Environmental Management System
- Demonstrate continuous improvement
- Community outreach & stakeholder involvement activities
- Sustained compliance record

[www.epa.gov/performance-track](http://www.epa.gov/performance-track)

# Summary

- **Compliance**
  - **Partnership**
  - **Metrics**
- ... and ...**



- **We want to be predictable**
- **We want to be consistent**
- **We want to be equitable**

# Partnership



Hal

Steve

Damon



# “Go Cowboys!”



**Go!**  
**Dallas!**  
**Cowboys!**

