

Cost Estimate Spreadsheet Update for Solid Waste Facility Closure and Post Closure

- LDEQ – Carson Schexnaider, Engineer, Waste Permits

Common Issues Regarding Cost Estimates

- Multiple back and forth NOD letters
- Confusion on DEQ expectations
- Questions regarding prices
- Vague guidance



Purpose of Update

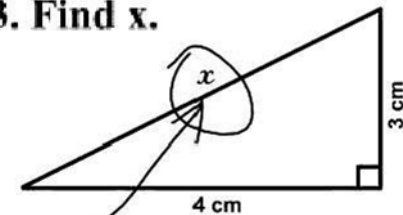
- Reduce Notice of Deficiencies letters
- Improve Department and Facility understanding
- Provide clarity on cost estimating
- Create common discussion points



Resolving the Issues

- Work group put together to standardize facility cost estimating
 - Discuss how facility closures vary
 - Determine reasonable costs
 - Create a spreadsheet for all to use
- Develop guidance document for completing cost estimates

3. Find x .



Here it is

Implementation and the Future

- Implement on future applications and renewals; date undetermined
- Increases to account for inflation
- Update costs every five years
- Working document



Glimpse at the Spreadsheet

Surface Impoundment Information			
ITEM	QUANTITY	UNITS	Source
Does the facility have a Surface Impoundment?		Yes or No	Permit or COC
Is the Surface Impoundment closed?		Yes or No	
How many years left on post closure? (Close in Place Only)		Years	
Is the facility "Clean Closing?"		Yes or No	Permit
If Closing in-Place Does the Facility have Soil Available to Close?		Yes or No	Permit or Facility
If soil is NOT available on-site, what is the haul distance?		Miles	Permit or Facility or Google Maps
Will the facility use a pump for dewatering and fly ash for sludge solidification? <i>(If no, please input alternative information in the "Alternative Table" to the right)</i>		Yes or No	
Number of Days to Complete Closure		Days	Permit
Surface Area of surface Impoundment		Acres	Permit
Depth of Surface impoundment		Feet	Permit
Sludge Bottom Thickness		Feet	Permit
Does The Surface impoundment have Geomembrane?		Yes or No	Permit
Specify landfill to be used for disposing of sludge (Clean Closure Only)			
Distance to landfill to be utilized		Miles	Google Maps

Type III Landfill Information			
ITEM	QUANTITY	UNITS	Source
Does the facility have Type III landfill?		Yes or No	Permit or COC
Is the landfill closed		Yes or No	Permit or COC
How many years left on post-closure		Years	Permit
Will/Was Hydroseed , grass seed , or both be used for closure?			
Current constructed cell area WITHOUT final cover		Acre	Permit or COC
Current constructed cell area WITH final cover		Acre	
Will the facility use soil for the landfill cap?		Yes or No	
What is the proposed final height?		Feet	
Is soil available on-site to apply final cover?		Yes or No	Permit or Facility
If soil is NOT available on-site, what is the haul distance?		Miles	Permit or Facility or Google Maps

Glimpse at the Spreadsheet

Type I/II Landfill Closure Costs							
ITEM	QUANTITY	UNITS	UNIT COST	Regional Factor	COST	SUBTOTALS	SOURCE OF UNIT COST INFO or NA
Low Permeability Soil Layer							
Mobilization (Tiered cost based on facility size)	0.00	EVENT	\$ -	0.0%	\$ -		Third Party Estimates
Complete soil contouring and grading for final cover	0.00	ACRE	\$ 3,150.00	0.0%	\$ -		RSMMeans Page 245; 31 22 13.20 0250
Clay, On-site							
Clay, On-Site (excavate, transport, place)	0.00	C.Y.	\$ 2.97	0.0%	\$ -		Third Party Estimates
Haul onsite	0.00	C.Y.	\$ 2.90	0.0%	\$ -		RSMMeans Page 274; 31 23 23.20 4016
Clay, Off-site							
Clay Price	0.00	C.Y.	\$ 2.97	0.0%	\$ -		Third Party Estimates
Haul onsite (20% Swell Factor)	0.00	C.Y.	\$ 2.00	0.0%	\$ -		RSMMeans Page 274; 31 23 23.20 4050-4086
Compaction	0.00	E.C.Y	\$ 1.50	0.0%	\$ -		RSMMeans Page 286; 31 23 23.23 6020
No Alternative Low Permeability Layer from Facility	###	UNITS	###		#VALUE!		Provided by Facility
Low Permeability Soil Layer Subtotal						#VALUE!	
Geomembrane and Drainage Layer							
Drainage material--sand	0.00	C.Y.	\$ 20.00	0.0%	\$ -		Third Party Estimates
Drainage material--geocomposite	0.00	S.F.	\$ 0.76	0.0%	\$ -		Third Party Estimates
Geomembrane	0.00	S.F.	\$ 0.60	0.0%	\$ -		Third Party Estimates
Exposed Geomembrane	0.00	S.F.	\$ 0.70	0.0%	\$ -		Third Party Estimates
FML w/ Artificial Turf	0.00	S.F.	\$ 2.50	0.0%	\$ -		Third Party Estimates
No Alternative Geogrid from Facility	###	UNITS	###		#VALUE!		Provided by Facility
Geomembrane and Drainage Layer Subtotal						#VALUE!	

Glimpse at the Spreadsheet

Total Cost Summary

Type I/II Landfill Closure	\$	-
Type I/II Landfill Post-Closure	\$	-
Surface Impoundment Closure	\$	-
Surface Impoundment Post-Closure	\$	-
Type III Landfill Closure	\$	-
Type III Landfill Post-Closure	\$	-
Geology Closure/Post-Closure	\$	-
Geology Well Maintenance	\$	-
Total Facility Costs	\$	-

Inflationary Factor Line

Thank you for your time today!



Carson Schexnaider

(225) 219-9832 and carson.schexnaider@la.gov