



AIR & WASTE MANAGEMENT  
ASSOCIATION

Louisiana Section

## Louisiana Section of Air & Waste Management Association

### Chair Perspective

Hello members, as I look out of my window on this beautiful Friday afternoon at the office, I am wondering if the weather will stay as nice as it is today for the weekend. This is a time to relax and spend time with my family. I can't believe we are at the end of April and how fast 2011 is moving forward. ERIC is wrapping up and TRI is just around the corner. Of course we remind ourselves about the kick off of ozone and hurricane seasons. We also should reflect on the recent weather events in neighboring states which have left much destruction and loss of life. It goes to show us how things can change at a moment's notice. When we consider environmental impact we can look at a broad spectrum of events, both natural and man-made that can change things at a moment's notice.

Furthermore, when we reflect on tragic events like the Tsunami in Japan we often understand that sometimes preparation isn't enough when it comes to nature. What an environmental impact! Now with the talk of radiation, do we believe that a heightened interest will be on further regulating radioactive materials? Probably not, but it will force us to focus on what environmental incidents can be triggered by natural disasters and prepare just as we do for hurricanes. Hurricane preparedness is ensuring emergency plans are in place to prepare equipment and prevent spills in the events of high winds and flooding. Emergency declarations are generally issued by the agencies. We consider flying debris and protection of our personnel. All of the "What If" scenarios are considered. Buildings were built in Japan to withstand earthquake force but industry along the coast could not withstand a 30 foot tidal wave. Sometimes we don't catch the "What if" in our preparation. We should prepare as much as possible none-the-less. So are we preparing for the upcoming ozone season? If we are in the affected parishes list, which will continue to grow, we should have plans in place to mitigate what operations might do to affect contributions to the ambient air quality standards. Overall industry has done a good job of preparing and mitigating for ozone season. We should all look into what we as individuals can do to further enhance industry's efforts. Okay, my lawn mower still uses gasoline but it is refreshing to go to the local big box home store and see other options. I can contribute by preparing to cut the grass at certain times of the day though!

In the aftermath of Earth Day (April 22, 2011) the EPA is promoting a continuing program called "Pick 5 for the Environment". This is my pick 5; **1) Use only the water you need, and reuse when possible 2) Plant a tree! Or Plant Many Trees 3) Learn about composting, try it out! 4) Save energy at home. 5) Recycle metals, plastics and paper.** I would encourage you to visit the website and get the family to try it out! We all understand our contributions to the Earth and we also all understand that this Earth can change "At a Moment's Notice"!

**Mark Your Calendar!**  
The Louisiana Section of A&WMA will hold it's annual fall conference on October 25 and 26 at the Crowne Plaza Hotel in Baton Rouge.

### Special points of interest:

- Important Dates
- Check out our new members!
- Upcoming A&WMA Louisiana Section Fall Conference
- Nominate New Officers

### Inside this issue:

Corporate Sponsors	2
Special Thanks from LSU A&WMA Student Chair	2
Composting 101	4
The LA Section Inaugural Golf Tournament	5
New members	5
Upcoming fall Conference	6
New Officer	6
Important Dates	6
Composting 101	7

## Chair Perspective Continued...

*Continued from page 1...*

Speaking of changing subject at a moment's notice, look for highlights in the newsletter of our recent Education and Scholarship Application efforts! Will you be attending the A&WMA "ACE" to be held in Orlando this year? As always it should be a great venue! Our website is a good tool to keep up with Association and Section activities. Of course I can't forget our annual luncheon meeting to be held May 19<sup>th</sup>. More information to come in the next week or so!

In closing, I am thankful to be a member of this organization and look forward to seeing you at our upcoming events for the remainder of 2011.

**Section Chair  
Julie Roussel**

---

## Special Thanks from LSU A&WMA Student

One of my all time favorite songs is "Closing Time," by Semisonic. Released when I was only eight years old, I never thought it would be on my iPod playlist as a college senior. Yet here it is, the words "open all the doors and let you out into the world" ringing in my ears, and the ears of my fellow graduates. As we close our undergraduate careers at LSU there is no length of gratitude that can convey the thanks we have for the members of the Louisiana Section. We have had the great pleasure of speaking to many of you at various events and some even taught our classes, giving us a rare look into the environmental industry and the tools we will need to survive and succeed. Also, a special thanks must be given to Dr. Maud Walsh, our exceptional faculty advisor. Dr. Walsh's guidance and commitment to the environmental management program was, in my opinion, the best part of my four years at LSU. But, as the song goes, "every new beginning comes from some other beginning's end," and with that I would like to introduce the LSU student chapter officers for the 2011-2012 academic year: **Chapter Chair and Executive Liaison Gray Melancon, Vice Chair/Social and Service Chair Noel Davis, and Secretary/Treasurer Katherine "Katie" Clarke**. You will see these excellent officers at many events as they will continue the proud tradition LSU A&WMA is building. A&WMA has been a great opportunity for me, taking me across North America and back, and I relish the opportunities and challenges ahead as I transition to the best YP chapter in the Association.



Good luck to all of my fellow graduates and as always, GEAUX TIGERS!

**Paul Algu  
A&WMA Student Chair, LSU Chapter**

---

## Special Thank You To Our CORPORATE SPONSORS

- ExxonMobil Chemical Company
- Syngenta Crop Protection, LLC
- Emission Testing Services, Inc.
- US Risk Management, LLC
- Rubicon, LLC
- C-K Associates, LLC
- RTP Environmental Associates, Inc.
- TOTAL Petrochemicals USA, Inc.
- Kean, Miller, Hawthorne, D'Armand, McCowan & Jarman, LLP
- Valero Energy Corporation
- Alon Refining—Krotz Springs, Inc.
- Union Carbide Corporation
- Sage Environmental Consulting
- Ultra Consulting, LLC
- E.I. DuPont de Nemours—Pontchartrain Site
- William Olefins, LLC
- ENVIRON International Corp.
- Cornerstone Chemical Company
- Geosyntec Consultants Inc.
- Entergy Services Inc.

## Louisiana Section Accepting Nominations for Annual Industry Award

In 2001 the Louisiana Section of the Air & Waste Management Association established an annual award to recognize outstanding achievement in the fields of air pollution control or waste management.

The Section is now requesting nominations for the 2011 Industry Award. Air pollution technical specific processes which minimize, or more effectively control air pollution; new air pollution equipment; and improved management practices which reduce air pollution or examine its impacts (i.e. sophisticated models). Material/waste engineering projects may include: production process changes that minimize by-product formation; processes for recycling/reuse of by-products and/or waste; applied novel techniques for destroying waste; and overall improved systems for waste disposal. The 2011 award recipient will be a company or individual whose contribution to the state of the art technology has been accomplished within the last two years.

Please submit the name of the company or individual being nominated, plus a short description of the project or achievement. Submittals should not exceed ten pages (including text, figures, calculations, photographs, etc.) and should be sent to one of the following address:

[Jason.Midgett@alonusa.com](mailto:Jason.Midgett@alonusa.com) (preferred)

OR

Alon Refining Krotz Springs, Inc  
Attn: Jason Midgett (Environmental)  
Air & Waste Management Association, LA Section  
Hwy 105-S, P.O. Box 453  
Krotz Springs, LA 70750



The company being nominated should either be a Corporate Sponsor of the Louisiana Section of the Air & Waste Management Association or have at least one employee who is a member of the Association. Nominations will be accepted through August 19, 2011 and the award will be presented at the September Dinner Meeting. We look forward to receiving your nominations!

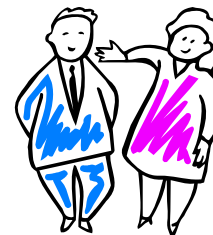
**Education Chair**  
**Jason Midgett**  
**LA Section Awards Chair**

---

## Welcoming Our New Members

Elizabeth Bastian, Monsanto  
DJuana Beason, Accutest Laboratories  
Bruce Brocka, CertainTeed Corp.  
Arlene Brooks, LDEQ  
Chris Carrington, ERM  
H. DeWayne Corley  
Sarah Doucet, Sasol North America, Inc.  
Holli Ensz, DOI-BOEMRE  
Allen Fayland, LSU Student  
Leslie Hudson Glenn, RTP Environmental Associates, Inc.  
Robert Handy, Jr., Georgia Gulf Chemicals & Vinyls, LLC  
Charlotte Hooker, Noranda Alumina LLC

Mary Idlett, Sasol North America, Inc.  
Joseph Ingram, LSU Student  
Dorothy Jones, On Demand Environmental  
Douglas LaBar, C-K Associates, LLC  
Jeffrey McBride, ENVIRON  
Sixto Mendez, LSU Student  
Michael Murla, ENVIRON International Corporation  
William Myers, RTP Environmental Associates, Inc.  
Leslie Pietras, Liskow & Lewis  
Jeff Schweitzer, CITGO Petroleum Corporation  
Anna Todd, ConocoPhillips  
Cy Toups, T. Baker Smith, Inc.



## The LA Section Inaugural Golf Tournament

The LA Section Inaugural Golf Tournament was hosted by the YP Group on April 11th! The tournament was open to YPs and non-YPs, members and non-



members, and pulled over 40 players including A&WMA President Jeff Muffat. Over \$230 were raised through mulligan purchases to fund a Louisiana teacher's classroom science project chosen from DonorsChoose.org. The Golf Tournament Committee selected "Saving Our River: Point to the Source" at Richwood High School in Monroe, LA. Revenue generated from the Golf Tournament will help support the future growth of the YP Group and provide new opportunities



for YP members to be involved in A&WMA. Thanks to the success of the tournament, the LA Section YP Group has offered sponsorship to three deserving YP to attend the A&WMA Annual Conference and Exhibition (ACE) in Orlando, Florida. Attending ACE offers the premier opportunity for networking, professional development, learning more about A&WMA, and getting more involved with A&WMA.

Many thanks to all of the players and sponsors that helped make the tournament a great success. Special thanks to Platinum Sponsor C-K Associates, LLC, and Silver Sponsors Crosstex Energy Services, L.P., PPM Consultants and Sage Environmental Consulting, L.P..



In June, the LA Section YP Group and Accutest Gulf Coast Laboratories will provide a presentation on sampling and laboratory analysis. Topics to be covered include: ordering sample containers,

proper preservatives, the importance of correct sample volume, icing samples, how to complete a chain of custody, sample labels, hold times and reading the lab report. For more information on the June

event, please contact Jennifer Tullier ([Jennifer.tullier@cka.com](mailto:Jennifer.tullier@cka.com)) or Jason Midgett ([jason.midgett@alonusa.com](mailto:jason.midgett@alonusa.com)).



**Jennifer Tullier**  
Young Professionals Co-Chair



## Important Dates

- June 7..... YP Event at Cheese Cake Bistro by Copeland's
- June 21-24 .....A&WMA Annual Conference & Exhibition—Orlando FL
- July 14 .....Meeting at Messina's in Kenner
- September 12-13.....Future Air Quality Development Needs Workshop Washington, DC
- September 15.....Meeting at Mike Anderson's—Holiday Inn in Gonzales
- October 25-26 .....Louisiana Section of A&WMA's Fall Conference, Plaza in Baton Rouge
- November 16.....Greenhouse Gas Strategies in a changing Climate, San Francisco, CA

## Upcoming A&WMA Louisiana Section Fall Conference



Mark your calendars! The Louisiana Section of A&WMA will hold its annual fall conference on October 25 and 26 at the Crowne Plaza Hotel in Baton Rouge. Due to the demand from last year, we are planning to have a larger exhibition this year. As some of you may know, the National Petroleum Refiner's Association (NPRA) has scheduled its annual environmental conference for October 24 and 25 in New Orleans. We are not able to move our conference date due to the contract with the hotel. We hope that those of you who do attend NPRA will make it to the second day of our conference. Please let your colleagues from other states know about our conference and encourage them to make the drive to Baton Rouge for Wednesday's technical sessions.

Planning for the conference is underway; please let us know if there are topics you would like to see included. We will accept abstracts again this year so begin thinking about a presentation you would like to make. Input from our members is what keeps our conference timely and informative. See you at the conference!

**Conference Co-Chairs**

**Karen Brignac**

**Jennifer Tullier**

## New Officer Nominations

The Louisiana Section will be holding its annual election for Officers and Directors in the fall. For this year, the Office of Secretary and one Director position will need to be filled. If you are interested in running for either of these positions or if you would like to suggest a member for nomination, please contact Bill Palermo, Chair of the Nominating Committee, at (504) 472-9993 or email to [bpalermo@rtpenv.com](mailto:bpalermo@rtpenv.com), no later than June 30, 2011.

**Chair of the Nominating Committee,  
Bill Palermo**

---

→ ←

**→ Share your ideas with us!**

Have an idea for the Monitor?  
Send it to the editor to see your thoughts in action.  
Contact [Morgan Verrette](mailto:Morgan.Verrette@rtpenv.com).

## Geauxing Green while on vacation

“Going green” is a concept that is spreading like wildfire (in the best sense of the phrase, of course). As people are becoming increasingly more aware of the state of our environment, many are eager to pitch in and do what they can. And while on vacation, you still have the ability to do your part without sacrificing your relaxation (don’t worry, you won’t be asked to go camping instead of checking into a hotel!).

### Here are some easy steps to “go green” on your vacation:

- Walk, bike, use public transportation, etc.: the less cars on the road, the better. You’ll benefit from increased exercise (and let’s face it: who couldn’t use more of that?) and a lack of fuel costs (which allows you to go parasailing instead of purchasing gas).
- Pack as light as possible. Leave behind that fifth pair of heels you’re just dying to pack and consider the upside: you won’t have to carry as much around and your transportation won’t be forced to use more fuel (to compensate for the increased weight your suitcase will add on).
- In addition to the convenience of instantly seeing your shot, a digital camera (containing rechargeable batteries) will take great pictures and avoid contributing to the waste of disposable cameras and batteries.
- If renting a car is a necessity on your vacation, avoid the brand new sports car and go for the hybrid or smart car, which will go further on less gas.
- Follow the rules that you do when you’re at home: turn off the lights, turn off the TV, and turn off your air conditioner when leaving our hotel room. You’ll conserve in-room energy.
- Is it an absolute necessity to have your towels and sheets changed each day? If it is, go for it. If it’s not, hang your linens up to dry and reuse them. This conserves the energy and water that are required to wash them.
- You know that New Zealand lamb you’re feasting on? Well, it went through extensive long-haul shipping and handling to get here. Next time, choose locally grown meats, vegetables, fruits and wines that will not only help you appreciate what the area has to offer, but cut out unnecessary shipping.

<http://www.staymyrtlebeach.com/news-and-events/how-to-go-green-while-on-vacation/>

## Board of Directors and Committee Chairs

<b>Chair</b> – Julie Roussel	225-353-8956	<b>Speaker Co-Chair</b> – Greg Johnson	504-556-4115
<b>Vice Chair</b> – Karen Brignac	225-923-7270	<b>Speaker Co-Chair</b> – Shane Sandefer	225-389-3728
<b>Past Chair</b> – Michael Vince	225-219-3482	<b>Corporate Relations Chair</b> – Doug Melancon	985-536-5202
<b>Treasurer</b> – Raquel Murphy	504-561-6639	<b>Awards Chair</b> – Jason Midgett	337-566-0161
<b>Secretary</b> – Katie Ricks	504-472-6563	<b>Education Committee Chair</b> – Kevin Calhoun	225-766-7400
<b>Director (2008-10)</b> - Greg Johnson	504-556-4115	<b>Education Vice Chair</b> – Allyson Morales	
<b>Director (2009-11)</b> - Doris B. Grego	985-536-5437	<b>Communications Chair</b> – Kelly Bradberry	225-927-2258
<b>Director (2010-12)</b> - Diane Leche	225-977-1549	<b>Website Chair</b> – Diane Leche	225-977-1549
<b>S &amp; C Council Rep.</b> – Bill Palermo	504-472-9993	<b>LSU Student Chapter Chair</b> – Paul Algu	
<b>SW Chapter Chair</b> – Chuck Zukor	337-842-3858	<b>Young Professionals Co-Chair</b> – Jennifer Tullier	225-755-1000
<b>Facilities Chair</b> – Carol Murphy	504-472-9993	<b>Newsletter Chair</b> – Morgan Verrette	337-802-6263
<b>Membership Chair</b> – Veronica Crow	225-642-9787		

## Southwest Chapter Officers

<b>Chair</b> – Chuck Zukor	337-493-3301	<b>Past Chair</b> – Michael Dever	337-842-3858
<b>Vice Chair</b> – Anna Todd		<b>Membership Committee Chair</b> – Phyllis Holifield	337-708-8431
<b>Secretary</b> – Drew Cagnolatti	337-436-3248	<b>Program Committee Chair</b> – Sarah Doucet	337-494-5239
<b>Treasurer</b> – David Monfore	337-558-5961	<b>Nominating Committee Chair</b> – Don G. Johnson	337-708-4789

# Mark Your Calendars!

LA Section A&WMA Young Professional (YP) Event

**“Sampling for Laboratories: Ordering Sample Containers to Reading the Final Lab Report”**

presented by Accutest Gulf Coast Laboratories



Tuesday, June 7, 2011

Cheesecake Bistro by Copeland's

6171 Bluebonnet Blvd

Baton Rouge

YP Event: 5:30 – 7:00

Appetizers and Drinks Social/Mixer

Reservations YP Member: \$20/person

Reservations Non-member/Non-YP: \$25/person

RSVP by noon Thursday, June 2<sup>nd</sup>

You have field sampling coming up but you're not sure where to start. Which containers to use? How do you order containers? What are the hold times? How do you complete a Chain of Custody? How do you read the final lab report? These questions and many others will be answered at this meeting. Join us for food, drinks, and YP networking.

**Reservations: Reservations: You may now make your reservations and pay by credit card online. [Click here to register using this preferred method of payment.](#) Reservations may also be made by faxing this form to (504) 472-9963 or call Jennifer Tullier at (225) 755-1000 by Thursday, June 2<sup>nd</sup> at NOON.**

In order to complete your registration, we must receive your full name, company, and credit card information. If you do not attend, your credit card will be charged for the number of people for whom you made a reservation. If you have any questions about registering, please EMAIL Jennifer Tullier at Jennifer.tullier@c-ka.com. If you wish to use email to indicate your intent to attend the meeting, you are welcome to do so, however, please remember that your reservation will not be confirmed until your credit card information is received via telephone, FAX or mail. The Section cannot accept email messages containing credit card information and any such messages received will be deleted immediately for your protection!

Name/Company:				
Email:		Phone:		
Visa <input type="checkbox"/>	MasterCard <input type="checkbox"/>	American Express <input type="checkbox"/>	Expiration	/
Credit Card Number:				
Reservation: \$20/YP Member \$25/Non-member/Non-YP				